

Overview:

- Helideck windsock suitable used in hazardous areas Zone1&2, Explosive gas mixture IIA, IIB, IIC. It is designed with an internal LED floodlight to illuminate the windsock and prevent glare to pilots. The explosion proof illuminated windsock provides wind-speed and direction indication to pilots during landing and take-off day&night.

Compliant:

- ICAO Annex 14, Volume II, 4th Edition, July, 2013, chapter 5.1.1
- CAA-UK CAP 437 8th edition;Chapter 4,paragraph 4.5

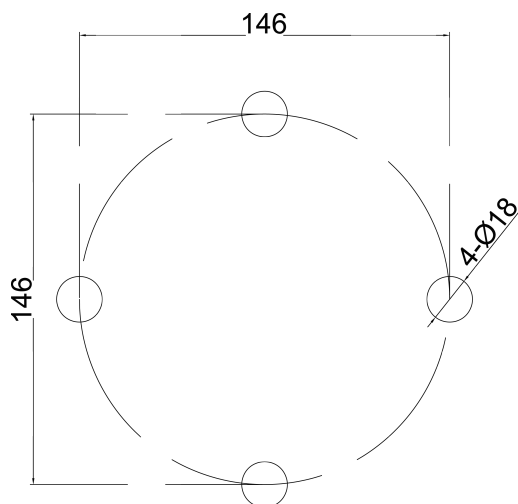
Why Ours:

- Use in Zone1, Zone2, Explosive gas mixture: IIA, IIB, IIC.
- Flexible rotation without obstruction to direction.
- Very low power consumption.
- Corrosion resistant 316 stainless steel bearing and support.
- Used with 110V to 240V AC, 50Hz/60Hz.
- No dazzling of pilots due to the internal lighted design.
- Explosion proof mark ExdeIICT6Gb.

Electrical Characteristics:

- Power by 110V to 240V AC, 50Hz/60Hz.
- 9W low power consumption.
- LED Internal light source 50,000 hours lifetime.

Mounting Size:



Ex



Physical Characteristics:

- 316 stainless steel support and bearing made.
- Internal lamp housing yellow spraying finish.
- Sleeve color white-red strips.
- Sleeve bigger mouth $\phi 46\text{cm}/18''$, $120\text{cm}/47''$ in length.
- Diameter $5.3''/13.5\text{cm}$, $9.25''/23.5\text{cm}$ in height.
- Outsize diameter(O.D) cable from 11mm to 13mm.
- IP66.
- 23KG weight net weight.
- International package size $83\text{cm} \times 55\text{cm} \times 79\text{cm}$.

Environmental:

- Operating at -50°C to 50°C .
- Wind speed: 80m/s.

