

L-865/864 CK Series White/Red Dual LED Medium Intensity Obstruction Beacon

Compliance&Approval:

- ICAO Annex 14, Volume I, 6th Edition, July, 2013
- ICAO Aerodromes Design Manual, Chapter 18
- FAA AC150/5345-43G
- FAA Engineering Brief 67 Specifications
- Medium intensity type A certified by Intertek
- Medium intensity type B certified by Intertek

Applications:

- ICAO medium intensity type A/B dual.
- FAA L-865/864 dual type.

Advantages:

- Dual type with a combination of white&red flashing in single light.
- Portable and lightweight, easy transportation.
- Fixture can be used with 100V~250V AC, 50Hz or 60Hz.
- GPS flash synchronization available integrated into light.
- Internal single chip computer control smart and reliable.
- Surge protection device integrated in the light.

Electrical Features:

- Operation voltage:100V~250V AC,50HZ/60HZ.
- Lamp:100,000 hours high quality LED.
- FPM:20 to 60 flashes/per minute pre-set in factory.
- Color:White day/twilight time;
Red nighttime.
- Output:360° horizontal; 4° vertical.
- Watts: Day/twilight time <30Watts;
Nighttime<10Watts.
- Lighting protection level:15KA

Physical Features:

- Housing: casting aluminum&PC lens cover.
- Finish: UV stablized spraying plastic.
- Overall size: φ26.8cm×20.6cm(φ10.5"×8.1").
- Mounting size: 16.6cm×16.6cm-4×M10.
- IP rating: IP65.
- Weight: 7KG.
- Operating: -40°C to 60 °C.
- Wind speed: 80m/s.

Optical:

- Daytime/Twilight:
ICAO medium intensity type A optical
&FAA L-865 compliant.
- Night:
ICAO medium intensity type B optical
&FAA L-865 compliant.
- Chromaticity compliant.

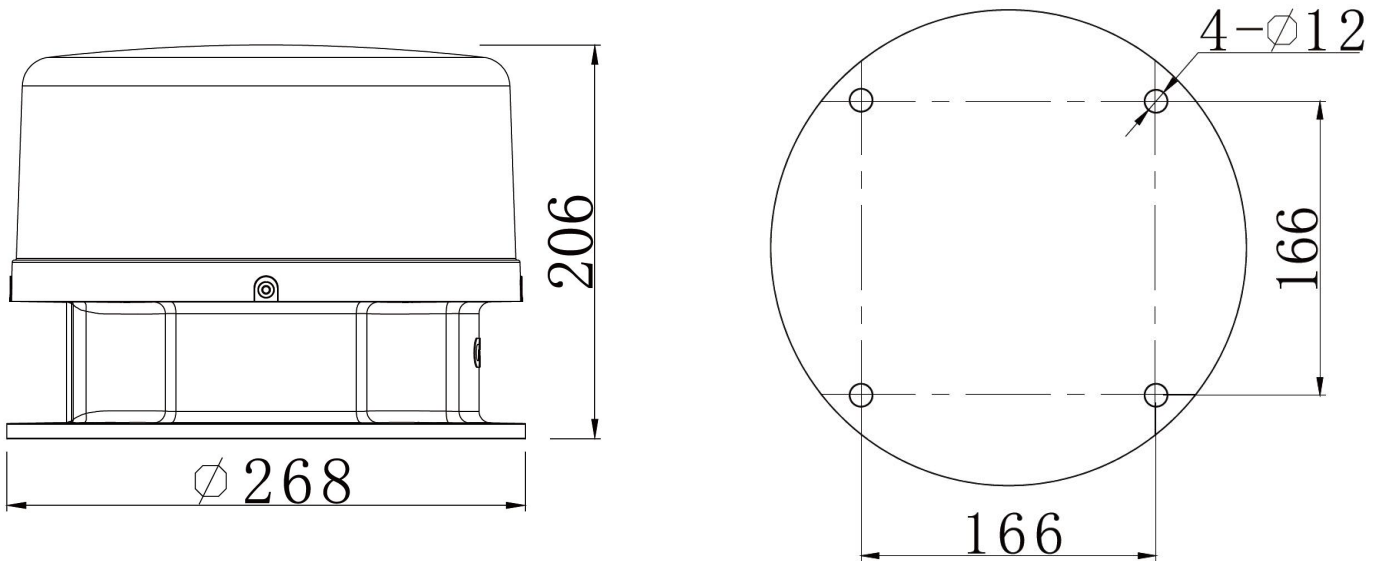


The CK series obstruction beacon utilizes state-of-the-art optical design to achieve smaller and portable shapes, better efficient and lower consumption.

This dual model is a medium intensity flashing red/white dual LED obstruction beacon designed for reliable day and night time marking of structures that represent a hazard to aviation. It incorporates the benefits of advanced LED and control to meet the challenges of the most demanding applications.

Widely used in any obstruction like high-rise buildings, chimney, broadcast, telecom, utilities & wind farm.

General Dimensions



Ordering Code:

Type	Color	Flash	FPM ¹	Lamp	Synchronized Method	Sensor Control	Monitor
13	White:	F: Flashing	30	AC: 100/250V	00 ²	I: Integrated ⁴	CP ⁶
Type A/B	day/twilight;		40	DC: 10/24V	SC ³	E: External ⁵	
L-865/864	Red:		60		GPS		
	Nighttime						

¹ FPM:Flashes per minute.

² 00: Standard single light, 3 core cables pre-wired, independently flash, can not synchronized flash with other lights.

³ SC: Signal cable controlled, 4 core cables pre-wired, multiple lights synchronized flashing without control panel.

⁴ I: Integrated photo sensor built in light, no need additional photo sensor.

⁵ E: External photo sensor, work with the control panel box together.

⁶ CP: Separate order the CP "control panel", for a purpose of light failure monitor and control function.